

Schneider Electric/Legacy Electric General Purpose Relays

781 Series
SPDT 20 A



UL listed when used with proper
Schneider Electric/Legacy Electric sockets



781 Clear Cover

781 Full-Feature Cover

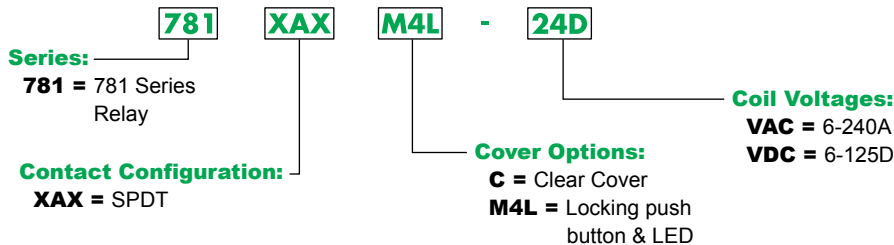
Description

The 781 Series plug-in relays offer clear or full-feature covers with multiple mounting options and accessories.

Feature	Benefit
20 A max. switching current	Ideal for automation control panels
14 mm width	Slim design saves valuable space
Clear or full-feature cover options	Full-feature covers include LED indicator & locking test button
Socket mount option	Simplifies installation & maintenance while also allowing the use of protection modules, hold-down clips & other accessories
Gold-flashed contacts	Reduces contact oxidation & increases shelf life
Mechanical flag indicator	Standard feature displays relay status during testing or operation

Contact Rating	Contact Configuration	Nominal Voltage	Coil Resistance (Ω)	Standard Part Number: Clear Cover	Standard Part Number: Full-Feature
20 A	SPDT	24 Vac 50/60 Hz	180	781XAXC-24A	781XAXM4L-24A
		120 Vac 50/60 Hz	4430	781XAXC-120A	781XAXM4L-110/120A
		240 Vac 50/60 Hz	15720	-	781XAXM4L-240A
		12 Vdc	188	781XAXC-12D	781XAXM4L-12D
		24 Vdc	750	781XAXC-24D	781XAXM4L-24D

Part Number Explanation



*Please note that 3 A Bifurcated, PC Terminals, and LED-only versions are also available. Please contact Customer Service for more information (847-441-2540).

Schneider Electric/Legacy Electric General Purpose Relays

781 Series
SPDT 20 A

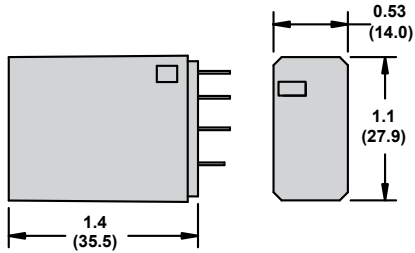
Specifications (UL 508)

Part Number	781XAX
Contact Characteristics	
Terminal Style	Blade
Contact Configuration	SPDT
Maximum Current	20 A
Contact Materials	Silver Alloy
Maximum Switching Voltage	300 V
Rated Switching Current at Voltage	Resistive: 20 A at 277 Vac 50/60 Hz; 20 A at 28 Vdc Motor: 1 hp at 250 Vac 50/60 Hz; 1/2 hp at 120 Vac 50/60 Hz Pilot Duty: B300
Minimum Switching Requirement	100 mA at 5 Vdc (0.5 W)
Coil Characteristics	
Maximum Operating Voltage	110% (AC / DC)
Maximum Pickup Voltage	85% (AC); 80% (DC)
Drop-out Voltage Threshold	15% (AC); 10% (DC)
Average Consumption	1.0 VA (AC); 0.8 W (DC)
General Characteristics	
Electrical Life at Rated Load	100,000 operations
Mechanical Life (Unpowered)	10,000,000 operations
Operating Time (Response Time)	20 ms
Dielectric Strength - Between Coil and Contact (AC)	1500 V(rms)
Dielectric Strength - Between Poles (AC)	1500 V(rms)
Ambient Air Temperature around the Device - Storage	-40 – +85 °C (-40 – +185 °F)
Ambient Air Temperature around the Device - Operation	-40 – +55 °C (-40 – +131 °F)
Vibration Resistance - Operational	3 g-n at 10-55 Hz
Shock Resistance	10 g-n
Degree of Protection	IP 40
Weight	29 g (1.02 oz)
Agency Approvals	UL with socket, UR (E43641), CE, CSA (LR40787), RoHS

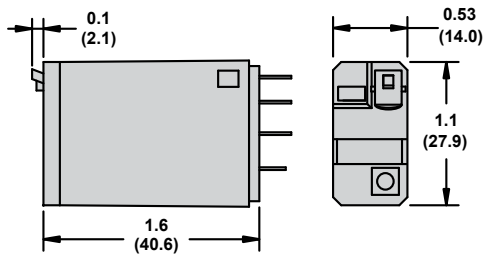
Note: Actual product performance may vary depending on application and environmental conditions.

Dimensions — inches (millimeters)

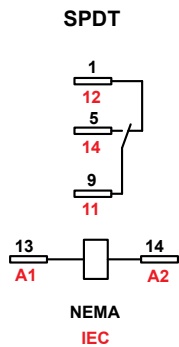
Clear Cover Dimensions



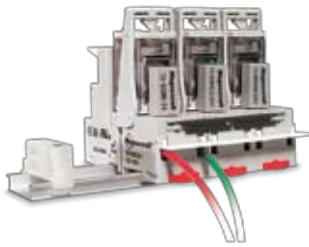
Full-Feature Cover Dimensions



Wiring Diagram



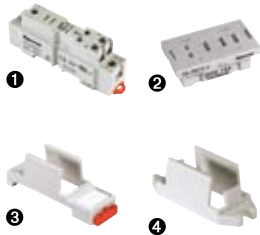
Schneider Electric/Legacy Electric General Purpose Relays 781 Series Accessories



Description

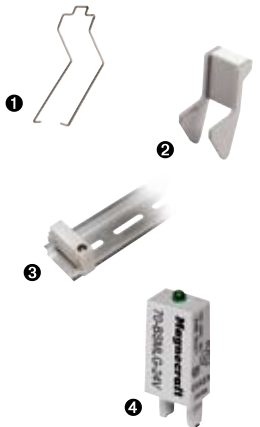
Optional sockets offer customizable, finger-safe™ solutions including protection modules, hold-down clips, and ID tags. Sockets are DIN rail and panel mount compatible.

Relay Accessories



Description	Function	For Use With Relays	Pkg. Min.	Standard Part Number
Socket ①	DIN/Panel mount with screw terminals & clamping plates	781	10	70-781D5-1A
Socket ②	PCB-mount socket		10	70-781T-1
Adapter ③	Mount directly to DIN rail		10	16-781C
Adapter ④	Mount directly to panel		10	16-781C1

Socket Accessories



Description	Function	For Use With Sockets	Coil Voltage	Pkg. Min.	Standard Part Number
Metal Spring Clip ①	Secures relay in socket	70-781D5-1A,, 70-781T-1	–	10	16-781SC
Plastic ID Hold-Down Clip ②	Secures relay in socket and provides labeling	70-781D5-1A	–	10	16-781IDC
Extruded Aluminum DIN Rail, 39.37" (1000 mm) ③	Quick installation and removal of sockets	70-781D5-1A	–	10	16-700DIN
DIN Rail End Clip ③	Holds sockets firmly in place on DIN rail	–	–	10	16-DCLIP-1
Small Socket Module	Protection Diode (Protects external drive circuitry from inductive voltages)	70-781D5-1A	6 to 250 Vdc	10	70-BSMD-250
Small Socket Module ④	LED Indicator (Provides coil status at a glance)		24 Vac/Vdc	10	70-BSMLG-24
Small Socket Module	MOV Suppressor (Protects from damaging electrical spikes)		120 Vac/Vdc	10	70-BSMM-120
			24 Vac/Vdc	10	70-BSMM-24
			240 Vac/Vdc	10	70-BSMM-240

Note: Use of LED socket module may increase coil power draw by up to 10%.